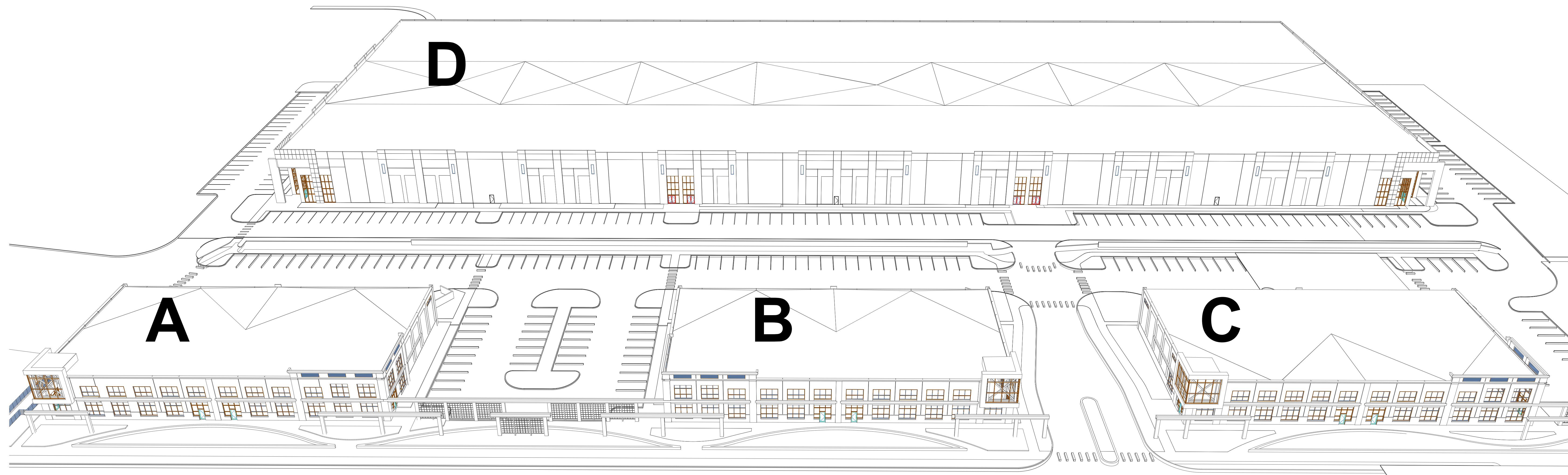
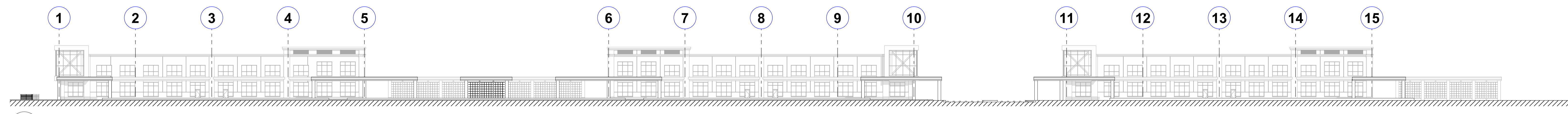


1 SOUTH ELEVATION OVERALL VIEW
SCALE: 1" = 30'



2 FLEX OVERALL SOUTH ELEVATION
SCALE: 1" = 30'



3 ARCADE OVERALL SOUTH ELEVATION
SCALE: 1" = 30'

CONSULTING ENGINEERS

PROJECT
Ewing Naval
Base
Redevelopment

Proposed
Buildings

Parkway Avenue
Ewing Twp., NJ

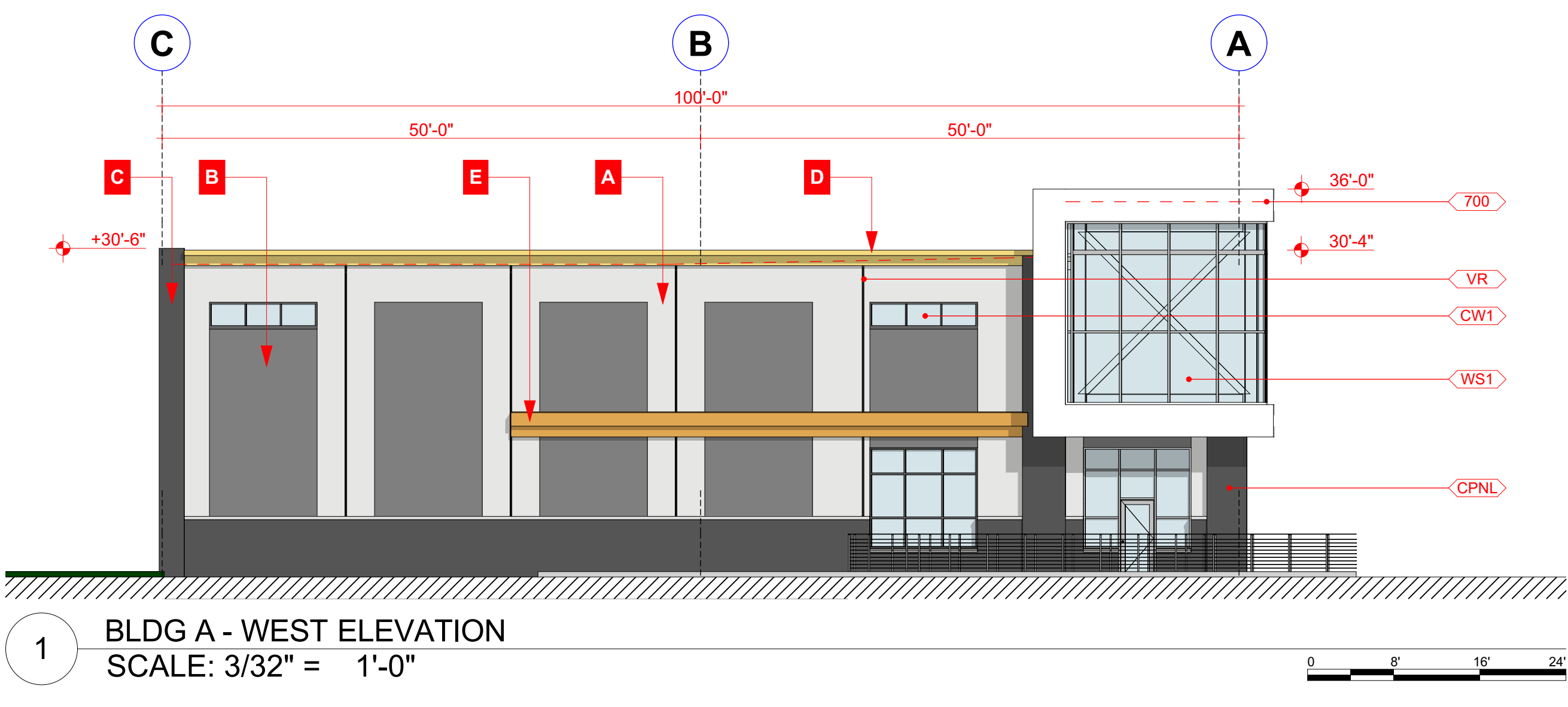
REV	DATE	DESCRIPTION

175 10th Street
Belford, NJ 07718
732.908.7232
Pratt-DS.com

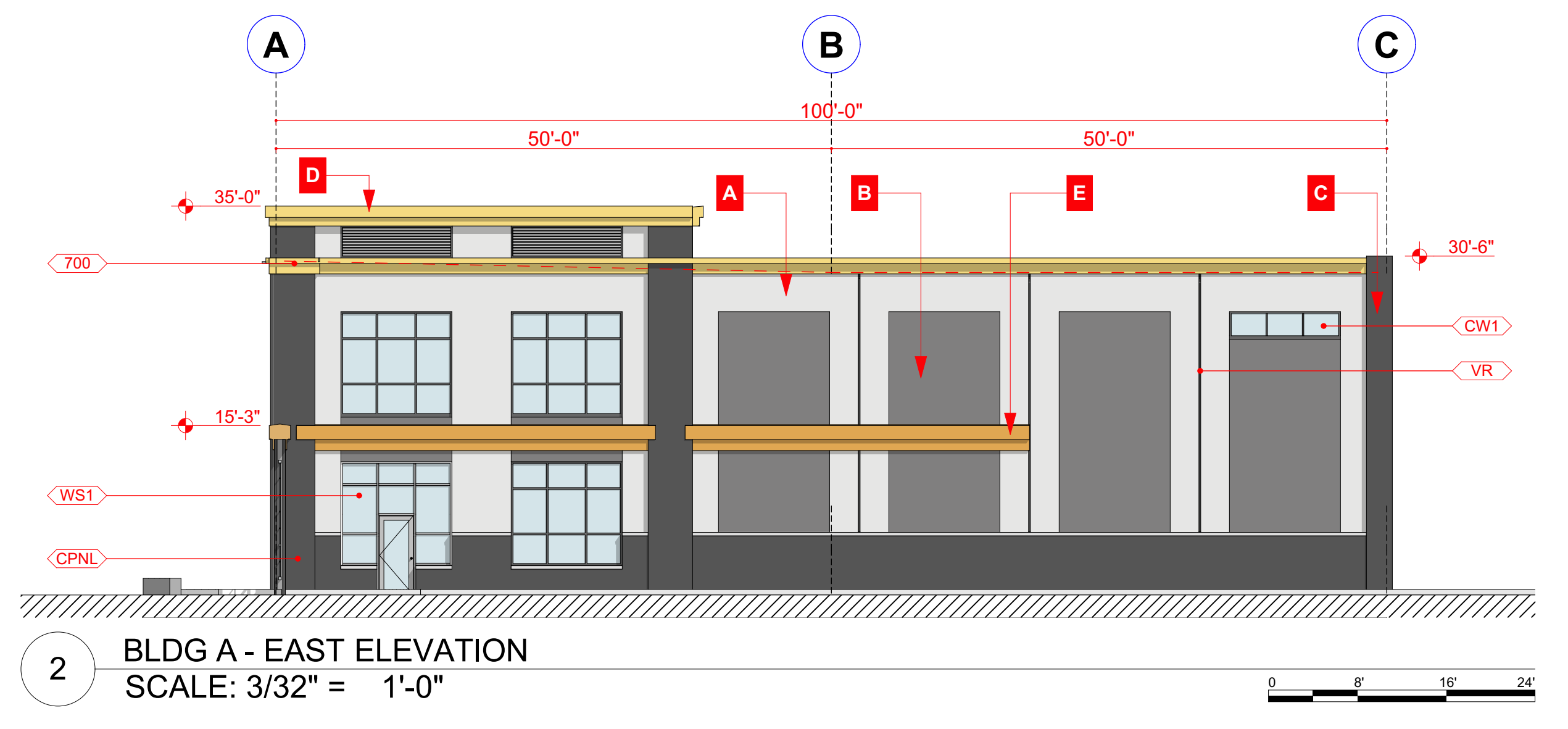
RICK PRATT, AIA
NJ: AI-012607

ISSUED: 9/2/2022
JOB NO: 22901

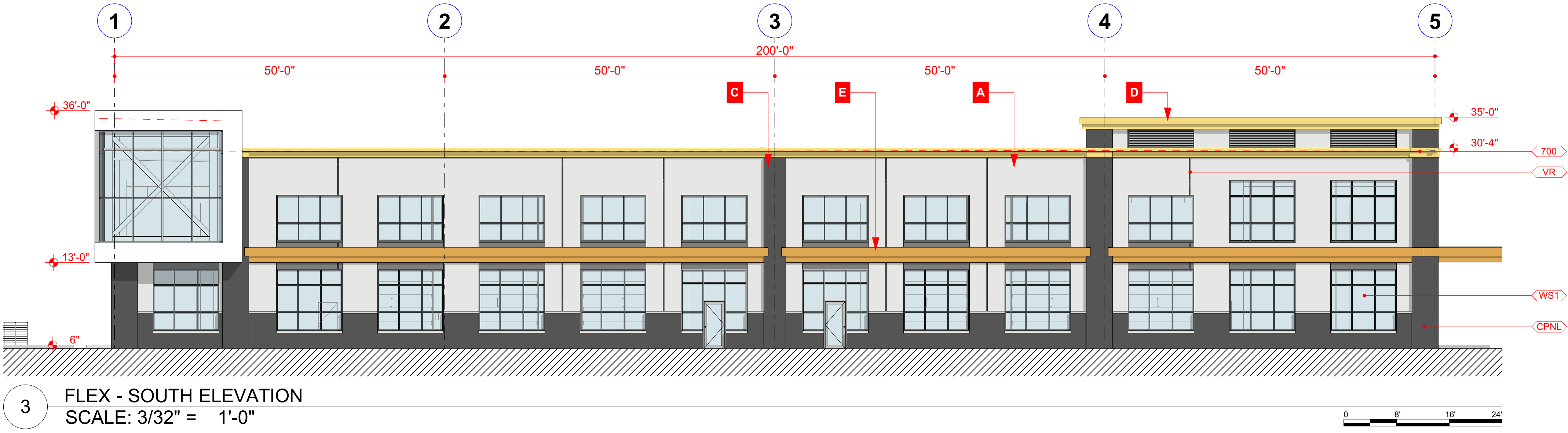
Overall Parkway Ave / FRONT ELEVATIONS / 3D



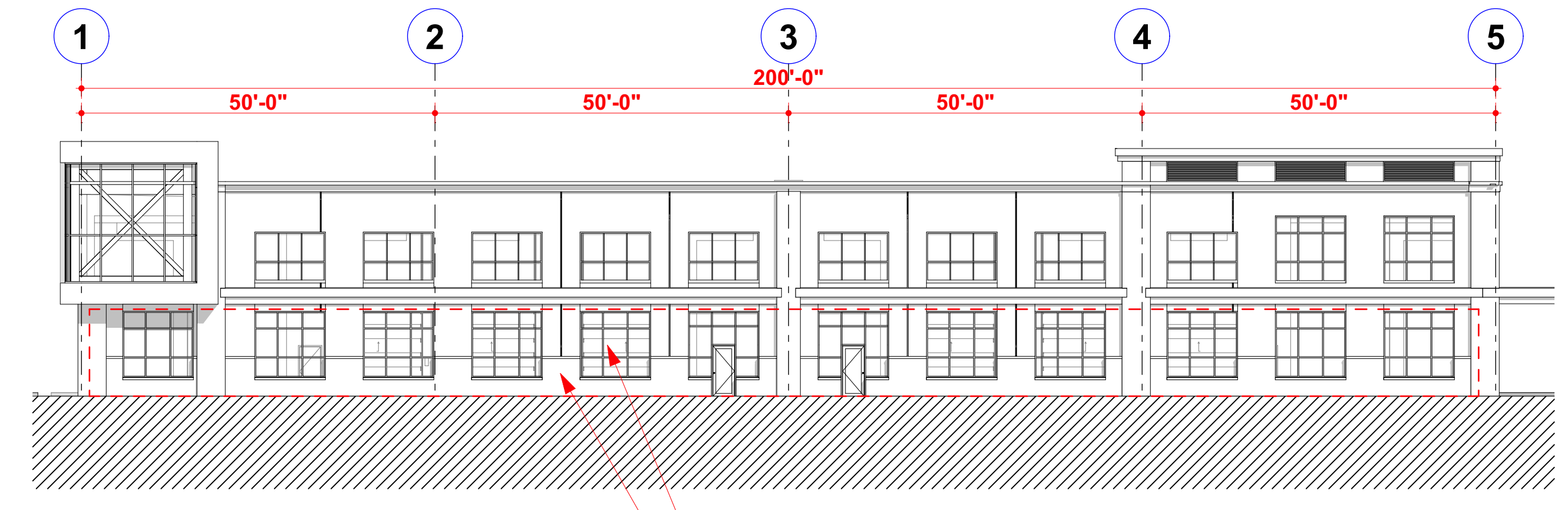
1 BLDG A - WEST ELEVATION
SCALE: 3/32" = 1'-0"



2 BLDG A - EAST ELEVATION
SCALE: 3/32" = 1'-0"

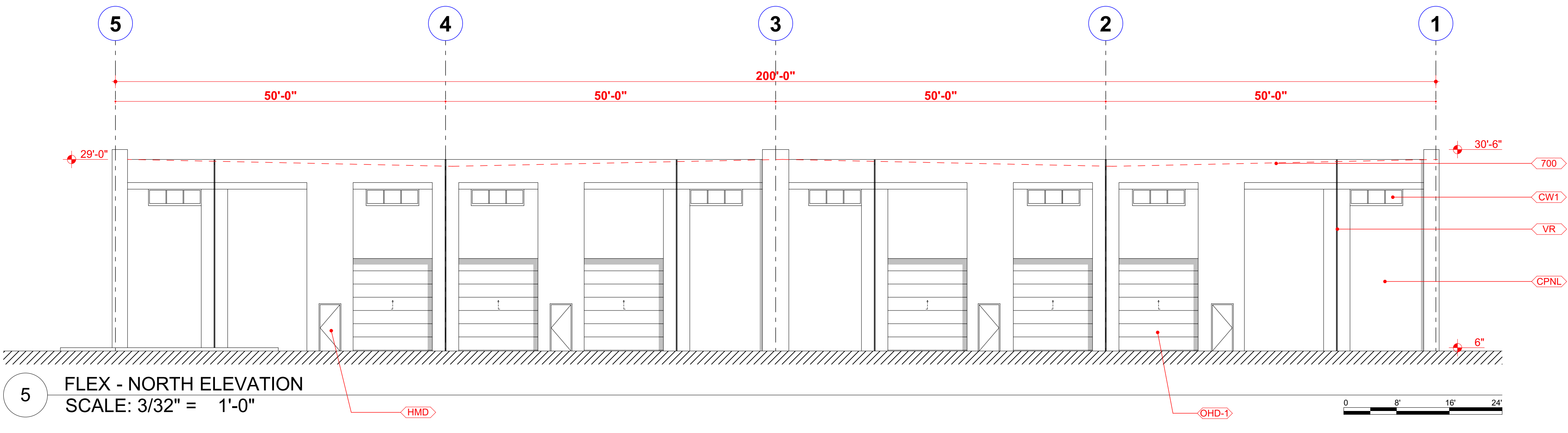


3 FLEX - SOUTH ELEVATION
SCALE: 3/32" = 1'-0"



4 WINDOW AREA CALCULATION
SCALE: 1/16" = 1'-0"

TOTAL WINDOW AREA = 1,152 SF
FACADE AREA BELOW EXPRESSION LINE = 1,920 SF
WINDOW OPENING PERCENTAGE = %60



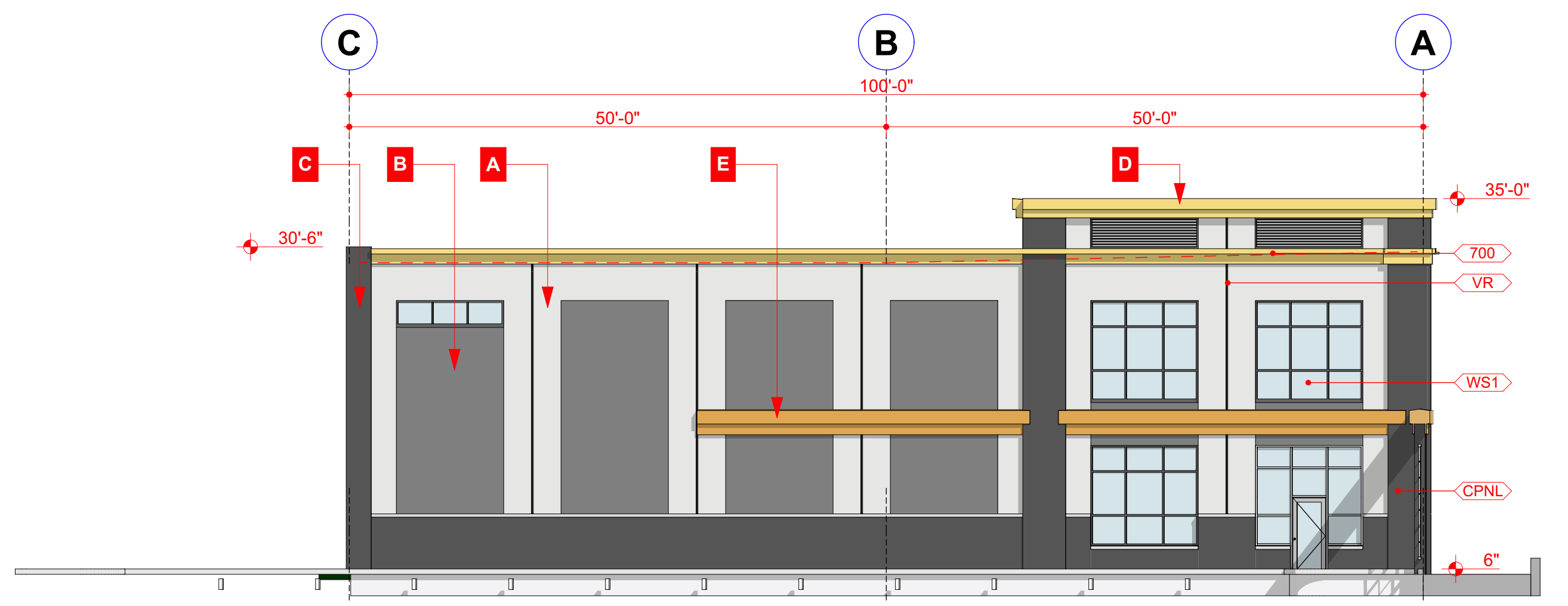
5 FLEX - NORTH ELEVATION
SCALE: 3/32" = 1'-0"

BUILDING ELEMENTS AND FINISH SCHEDULE					
SYMBOL	ITEM	FINISH	MANUFACTURER	COLOR	NOTES
$CPNL$	CONCRETE WALL PANEL	P1	SHERWIN WILLIAMS	SEE COLOR KEY	TBD
PWA	PROJECTING ACCENT WALL	-	-	-	-
WST	ALUM WINDOW SYS, w/ LOW-E GLASS	-	-	-	-
$SP1$	SPANDREL PANELS	-	-	-	-
$CNPY$	ENTRANCE CANOPY	-	-	-	-
$VA1$	PROJECTING VERTICAL ACCENT	-	-	-	-
HMD	HOLLOW METAL DOOR AND FRAME	-	-	-	-
$AW1$	FIXED ACCENT WINDOW	-	-	-	-
$CW1$	FIXED CLERESTORY WINDOW	-	-	-	-
HR	HORIZONTAL REVEAL	-	-	-	-
VR	VERTICAL REVEAL	-	-	-	-
$OHD-1$	OVERHEAD DOOR	-	-	-	-
$OHD-2$	OVERHEAD DOOR, DOCK SEAL	-	-	-	-
700	LEVEL OF ROOF BEYOND	-	-	-	-
$MTL-1$	STEEL STAIR w/ GUARDRAIL & HANDRAIL	ALL MATERIALS TO BE GALVANIZE	-	-	-

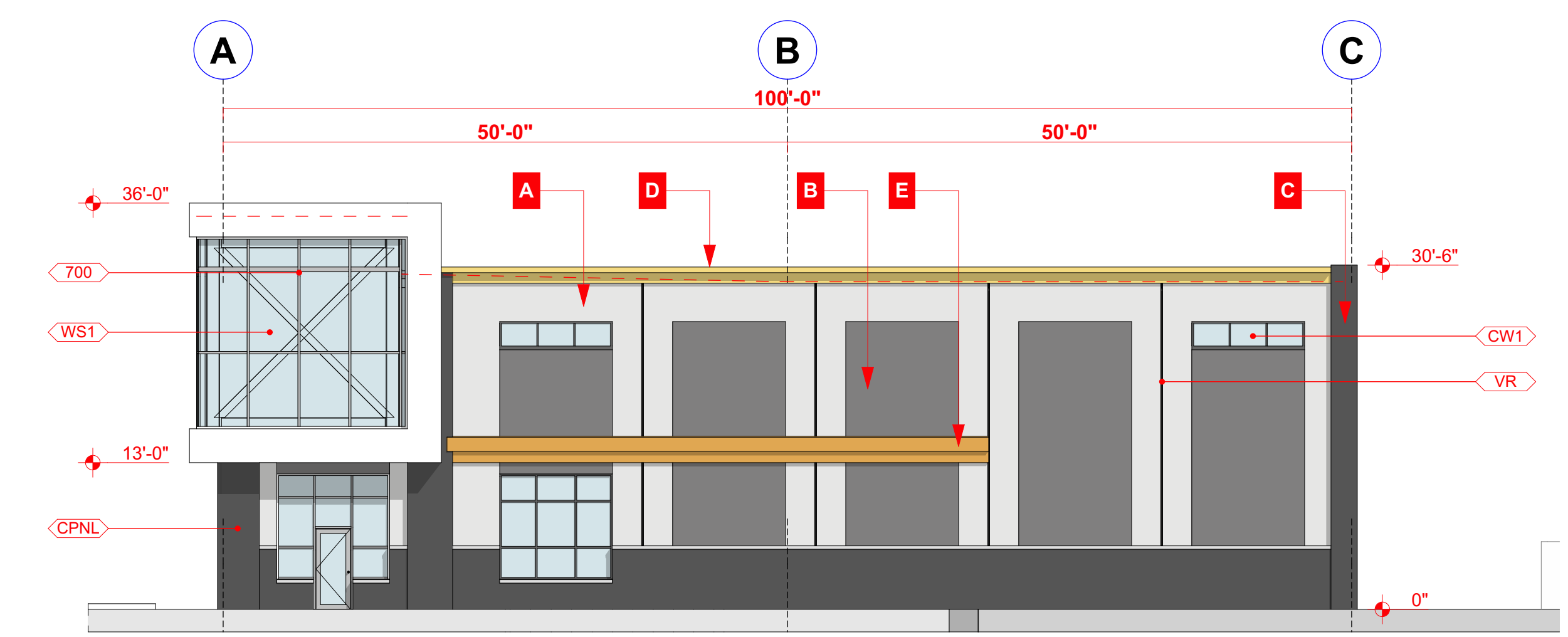
COLOR LEGEND		
A	BASE COLOR:	SW 7063 NEBULOUS WHITE
B	ACCENT COLOR:	SW 7081 SENSUOUS GREY
C	ACCENT COLOR:	SW 7674 PEPPERCORN
D	ACCENT COLOR:	SW 6901 DAFFODIL
E	ACCENT COLOR:	SW 6655 ADVENTURE ORANGE



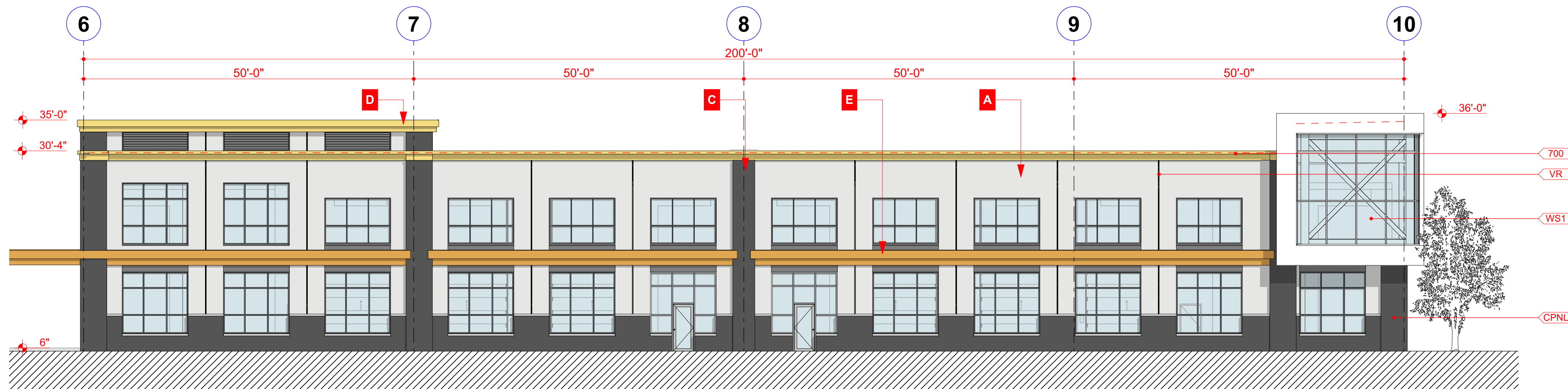
6 PERSPECTIVE BUILDING A
SCALE: 1:15.00



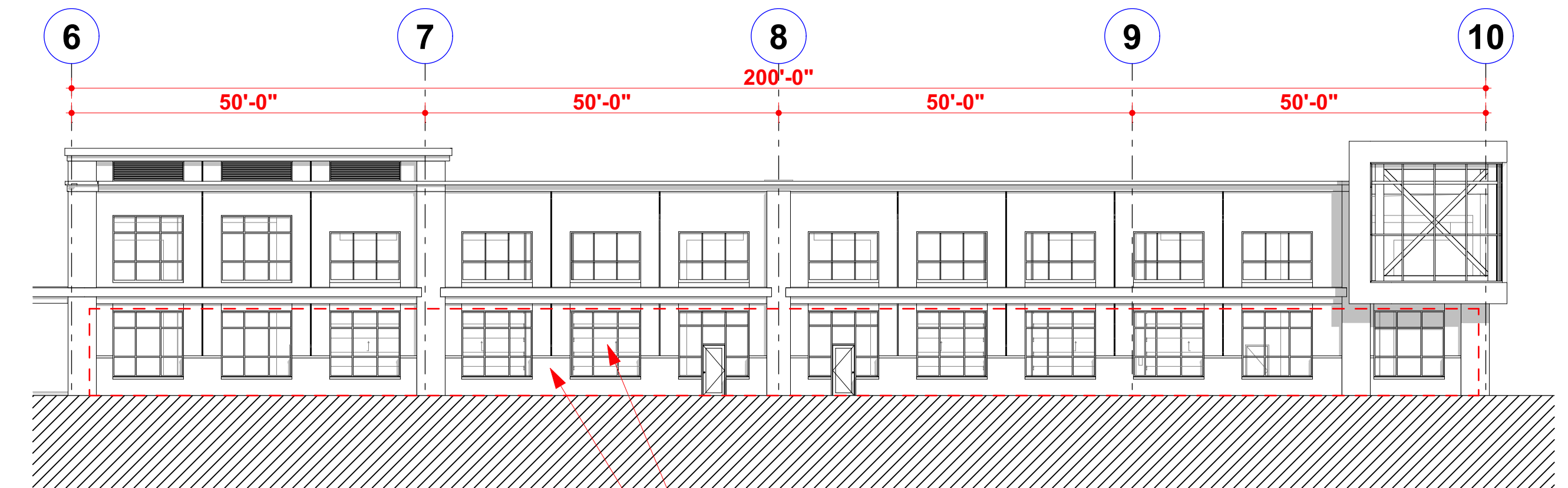
2 BLDG B - WEST ELEVATION
SCALE: 3/32" = 1'-0"



1 BLDG B - EAST ELEVATION
SCALE: 3/32" = 1'-0"

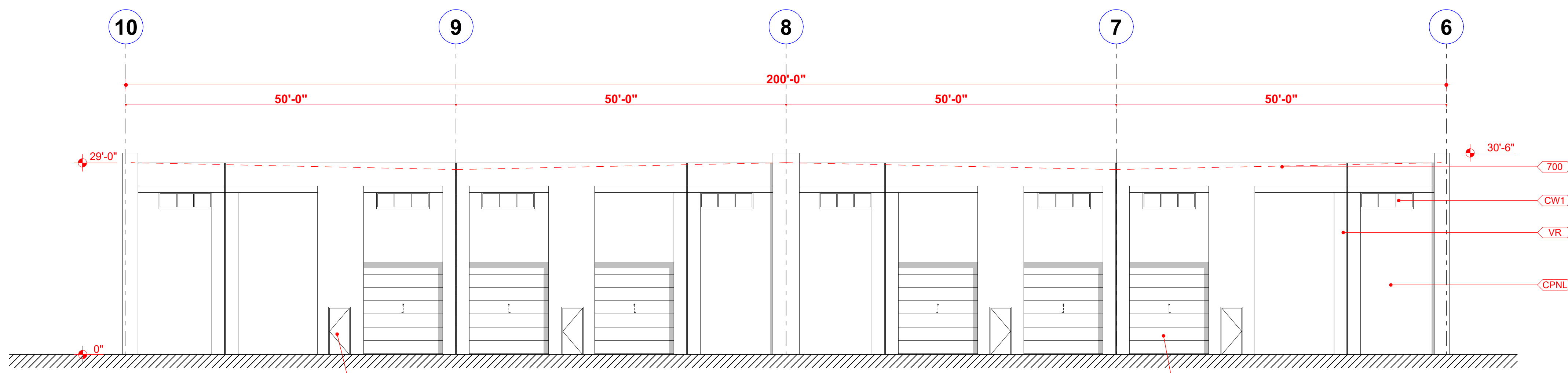


3 FLEX - SOUTH ELEVATION
SCALE: 3/32" = 1'-0"



4 WINDOW AREA CALCULATION
SCALE: 1/16" = 1'-0"

TOTAL WINDOW AREA = 1,152 SF
FACADE AREA BELOW EXPRESSION LINE = 1,920 SF
WINDOW OPENING PERCENTAGE = %60



5 FLEX - NORTH ELEVATION
SCALE: 3/32" = 1'-0"

BUILDING ELEMENTS AND FINISH SCHEDULE					
SYMBOL	ITEM	FINISH	MANUFACTURER	COLOR	NOTES
<CPNL>	CONCRETE WALL PANEL	P1	SHERWIN WILLIAMS	SEE COLOR KEY	TBD
<PWA>	PROJECTING ACCENT WALL	-	-	-	-
<WST>	ALUM WINDOW SYS, w/ LOW-E GLASS	-	-	-	-
<SP1>	SPANDREL PANELS	-	-	-	-
<CNPY>	ENTRANCE CANOPY	-	-	-	-
<VA1>	PROJECTING VERTICAL ACCENT	-	-	-	-
<HMD>	HOLLOW METAL DOOR AND FRAME	-	-	-	-
<AW1>	FIXED ACCENT WINDOW	-	-	-	-
<CW1>	FIXED CLERESTORY WINDOW	-	-	-	-
<HR>	HORIZONTAL REVEAL	-	-	-	-
<VR>	VERTICAL REVEAL	-	-	-	-
<OHD-1>	OVERHEAD DOOR	-	-	-	-
<OHD-2>	OVERHEAD DOOR, DOCK SEAL	-	-	-	-
<700>	LEVEL OF ROOF BEYOND	-	-	-	-
<MTL-1>	STEEL STAIR w/ GUARDRAIL & HANDRAIL	ALL MATERIALS TO BE GALVANIZE	-	-	-

COLOR LEGEND

- A** BASE COLOR: SW 7063 NEBULOUS WHITE
- B** ACCENT COLOR: SW 7081 SENSUOUS GREY
- C** ACCENT COLOR: SW 7674 PEPPERCORN
- D** ACCENT COLOR: SW 6901 DAFFODIL
- E** ACCENT COLOR: SW 6655 ADVENTURE ORANGE



6 PERSPECTIVE BUILDING B
SCALE: 1:15.45

PROJECT
Ewing Naval
Base
Redevelopment

Proposed
Buildings

Parkway Avenue
Ewing Twp., NJ

DESCRIPTION
DATE
REV

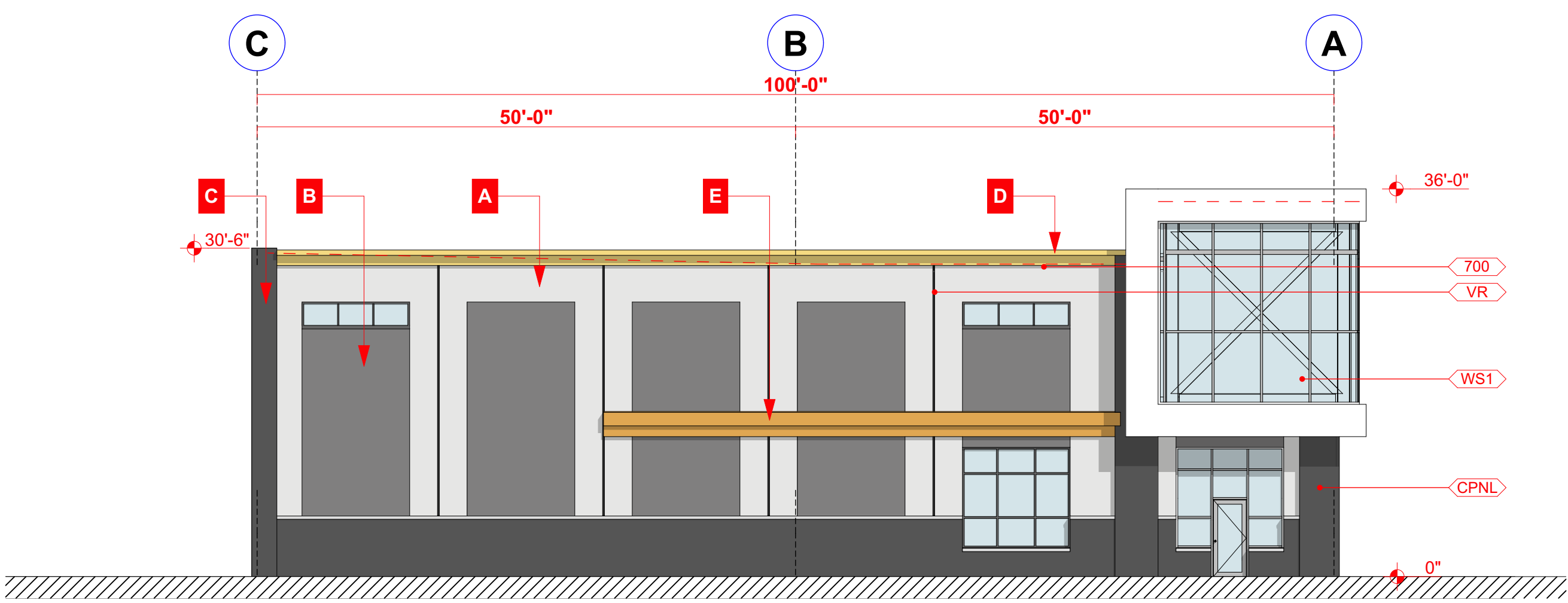
175 10th Street
Belford, NJ 07718
732.908.7232
Pratt-DS.com

RICK PRATT, AIA
NJ: AI-012607

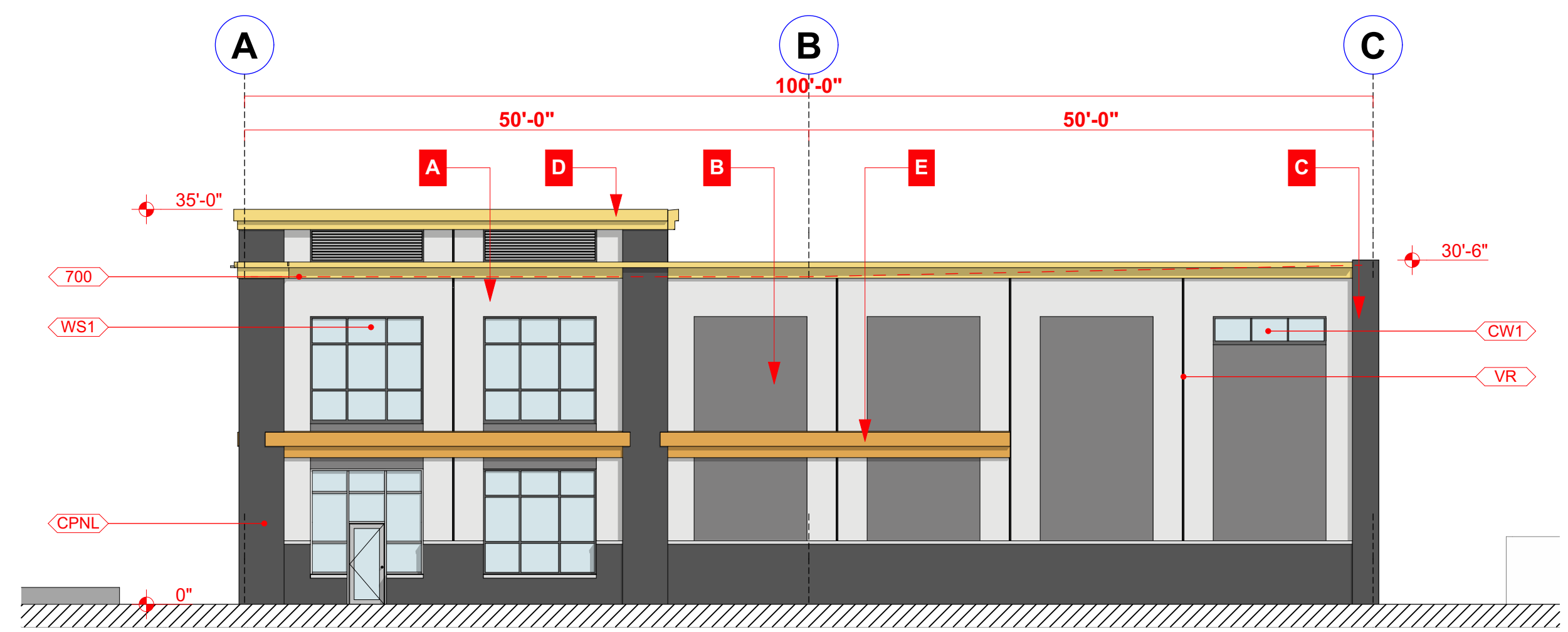
ISSUED: 9/2/2022
JOB NO: 22901

Building B - ELEVATIONS / 3D

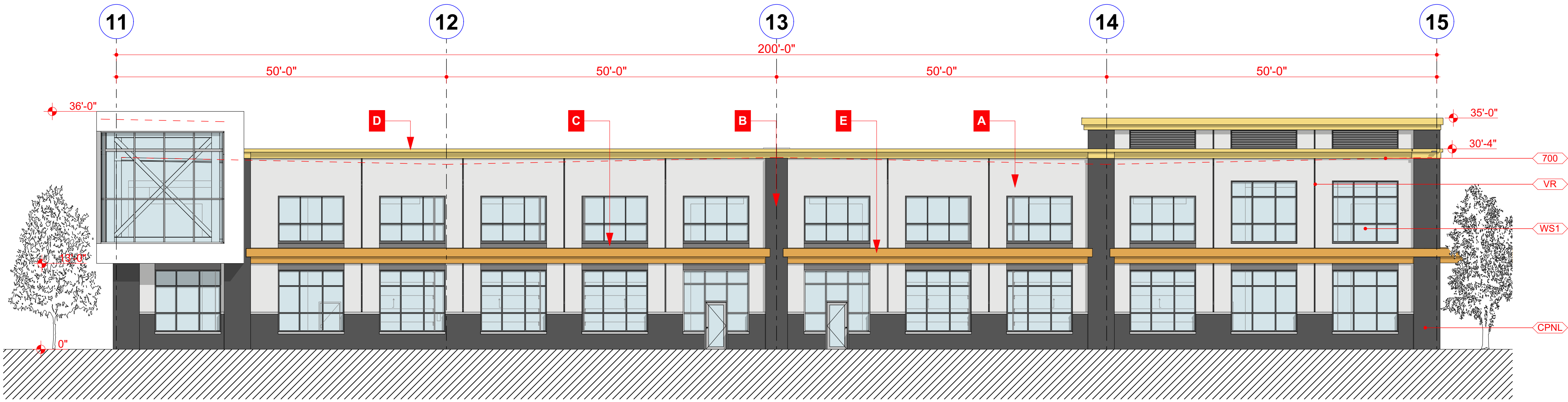
B
PB3.1



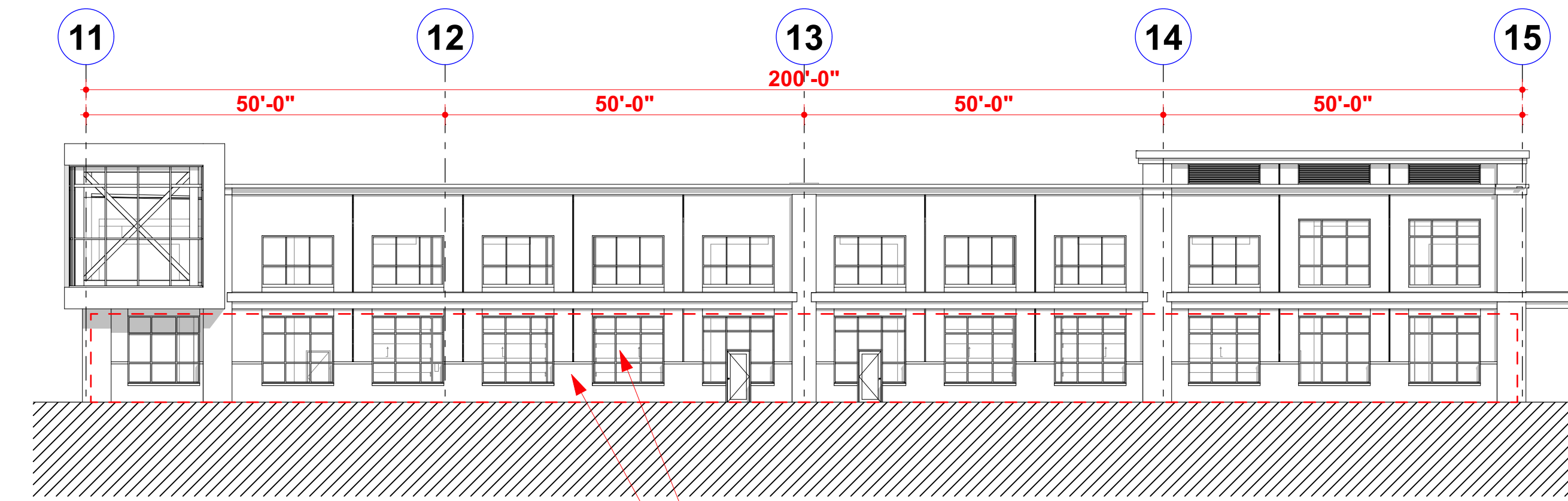
2 BLDG C - WEST ELEVATION
SCALE: 3/32" = 1'-0"



1 BLDG C - EAST ELEVATION
SCALE: 3/32" = 1'-0"

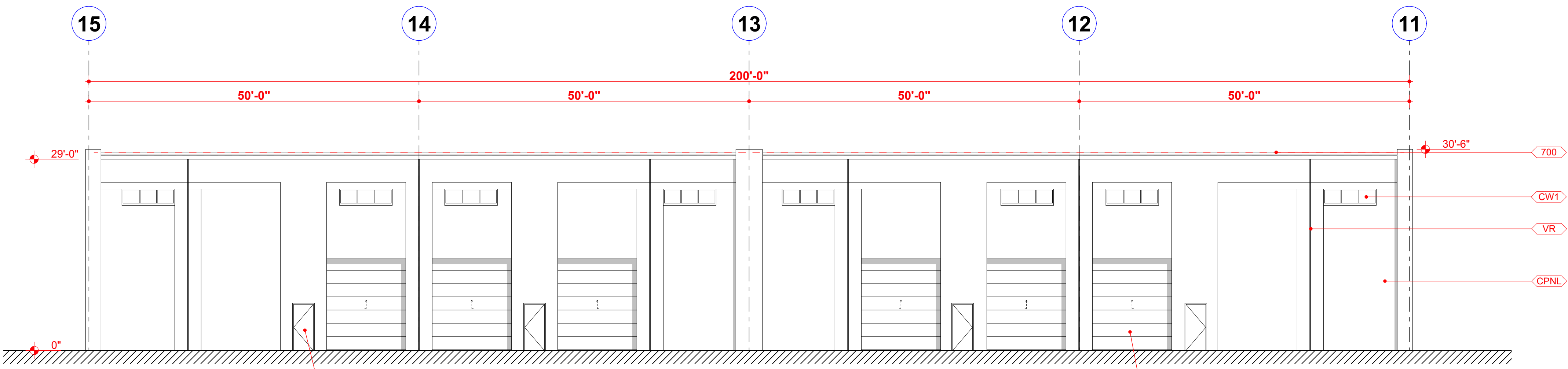


3 FLEX - SOUTH ELEVATION
SCALE: 3/32" = 1'-0"



4 WINDOW AREA CALCULATION
SCALE: 1/16" = 1'-0"

TOTAL WINDOW AREA = 1,152 SF
FACADE AREA BELOW EXPRESSION LINE = 1,920 SF
WINDOW OPENING PERCENTAGE = %60



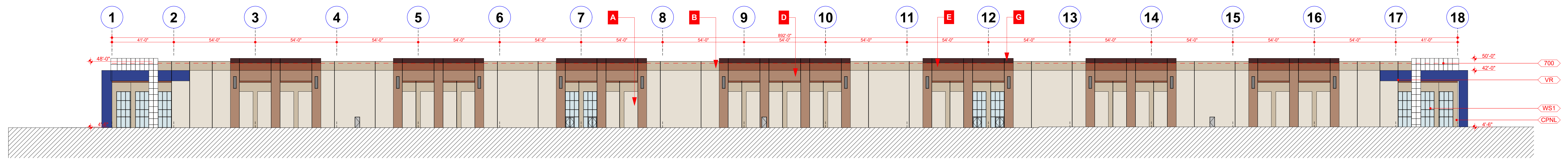
5 FLEX - NORTH ELEVATION
SCALE: 3/32" = 1'-0"

BUILDING ELEMENTS AND FINISH SCHEDULE					
SYMBOL	ITEM	FINISH	MANUFACTURER	COLOR	NOTES
<CPNL>	CONCRETE WALL PANEL	P1	SHERWIN WILLIAMS	SEE COLOR KEY	TBD
<PWA>	PROJECTING ACCENT WALL	-	-	-	-
<WST>	ALUM WINDOW SYS, w/ LOW-E GLASS	-	-	-	-
<SP1>	SPANDREL PANELS	-	-	-	-
<ENPY>	ENTRANCE CANOPY	-	-	-	-
<VA1>	PROJECTING VERTICAL ACCENT	-	-	-	-
<HMD>	HOLLOW METAL DOOR AND FRAME	-	-	-	-
<AW1>	FIXED ACCENT WINDOW	-	-	-	-
<CW1>	FIXED CLERESTORY WINDOW	-	-	-	-
<HR>	HORIZONTAL REVEAL	-	-	-	-
<VR>	VERTICAL REVEAL	-	-	-	-
<OHD-1>	OVERHEAD DOOR	-	-	-	-
<OHD-2>	OVERHEAD DOOR, DOCK SEAL	-	-	-	-
<700>	LEVEL OF ROOF BEYOND	-	-	-	-
<MTL-1>	STEEL STAIR w/ GUARDRAIL & HANDRAIL	ALL MATERIALS TO BE GALVANIZE	-	-	-

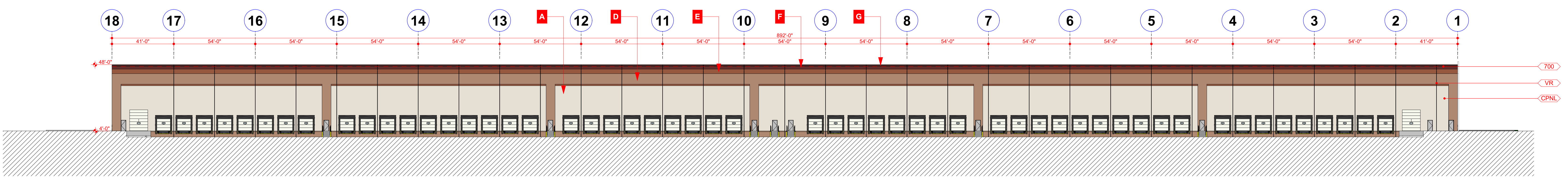
COLOR LEGEND		
A	BASE COLOR:	SW 7063 NEBULOUS WHITE
B	ACCENT COLOR:	SW 7081 SENSUOUS GREY
C	ACCENT COLOR:	SW 7674 PEPPERCORN
D	ACCENT COLOR:	SW 6901 DAFFODIL
E	ACCENT COLOR:	SW 6655 ADVENTURE ORANGE



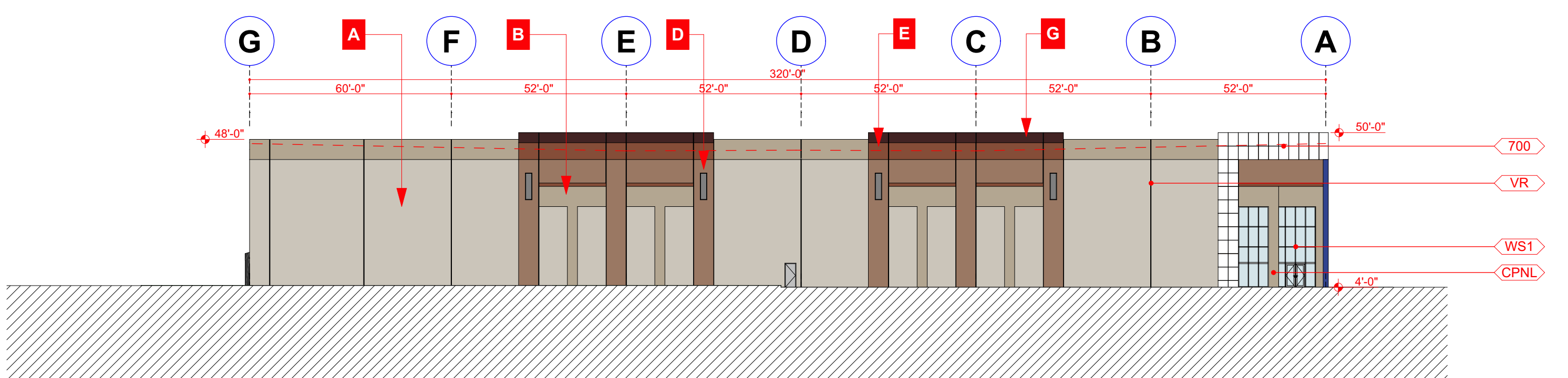
6 PERSPECTIVE BUILDING C
SCALE: 1:16.00



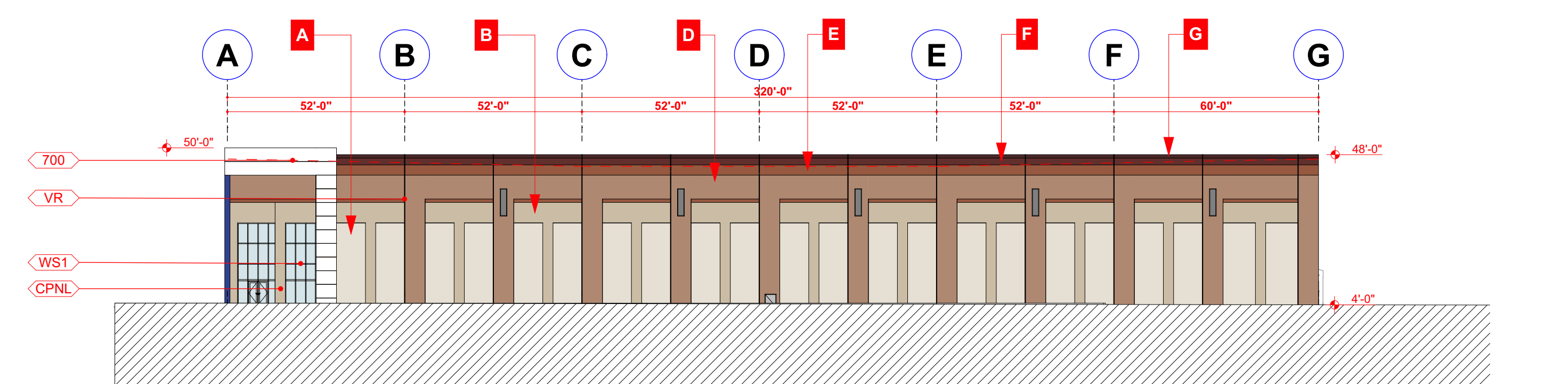
1 SOUTH ELEVATION
SCALE: 1" = 30'



2 NORTH ELEVATION
SCALE: 1" = 30'



3 WEST ELEVATION
SCALE: 1" = 30'



4 EAST ELEVATION
SCALE: 1" = 30'



5 LEFT CORNER ENTRY
NOT TO SCALE

BUILDING ELEMENTS AND FINISH SCHEDULE					
SYMBOL	ITEM	FINISH	MANUFACTURER	COLOR	NOTES
<CPNL>	CONCRETE WALL PANEL	P1	SHERWIN WILLIAMS	SEE COLOR KEY	TBD
<PWA>	PROJECTING ACCENT WALL	-			
<WST1>	ALUM WINDOW SYS. w/ LOW-E GLASS	-			
<SP1>	SPANDREL PANELS	-			
<CNPY>	ENTRANCE CANOPY	-			
<VA1>	PROJECTING VERTICAL ACCENT	-			
<HMD>	HOLLOW METAL DOOR AND FRAME	-			
<AW1>	FIXED ACCENT WINDOW	-			
<CW1>	FIXED CLERESTORY WINDOW	-			
<HR>	HORIZONTAL REVEAL	-			
<VR>	VERTICAL REVEAL	-			
<OHD-1>	OVERHEAD DOOR	-			
<OHD-2>	OVERHEAD DOOR, DOCK SEAL	-			
<700>	LEVEL OF ROOF BEYOND	-			
<MTL-1>	STEEL STAIR w/ GUARDRAIL & HANDRAIL	ALL MATERIALS TO BE GALVANIZE			

COLOR LEGEND

A	BASE COLOR:	SW 7022 SHOJI WHITE
B	ACCENT COLOR:	SW 2822 DOWNING SAND
C	ACCENT COLOR:	SW 6060 RENWICK BEIGE
D	ACCENT COLOR:	SW 2803 REINWICK ROSE BEIGE
E	ACCENT COLOR:	SW 2803 ROCKWOOD TERRA COTTA
F	ACCENT COLOR:	SW 2802 ROCKWOOD RED
G	ACCENT COLOR:	SW 2801 ROCKWOOD DARK RED
H	ACCENT COLOR:	SW 6516 DOWNPOUR