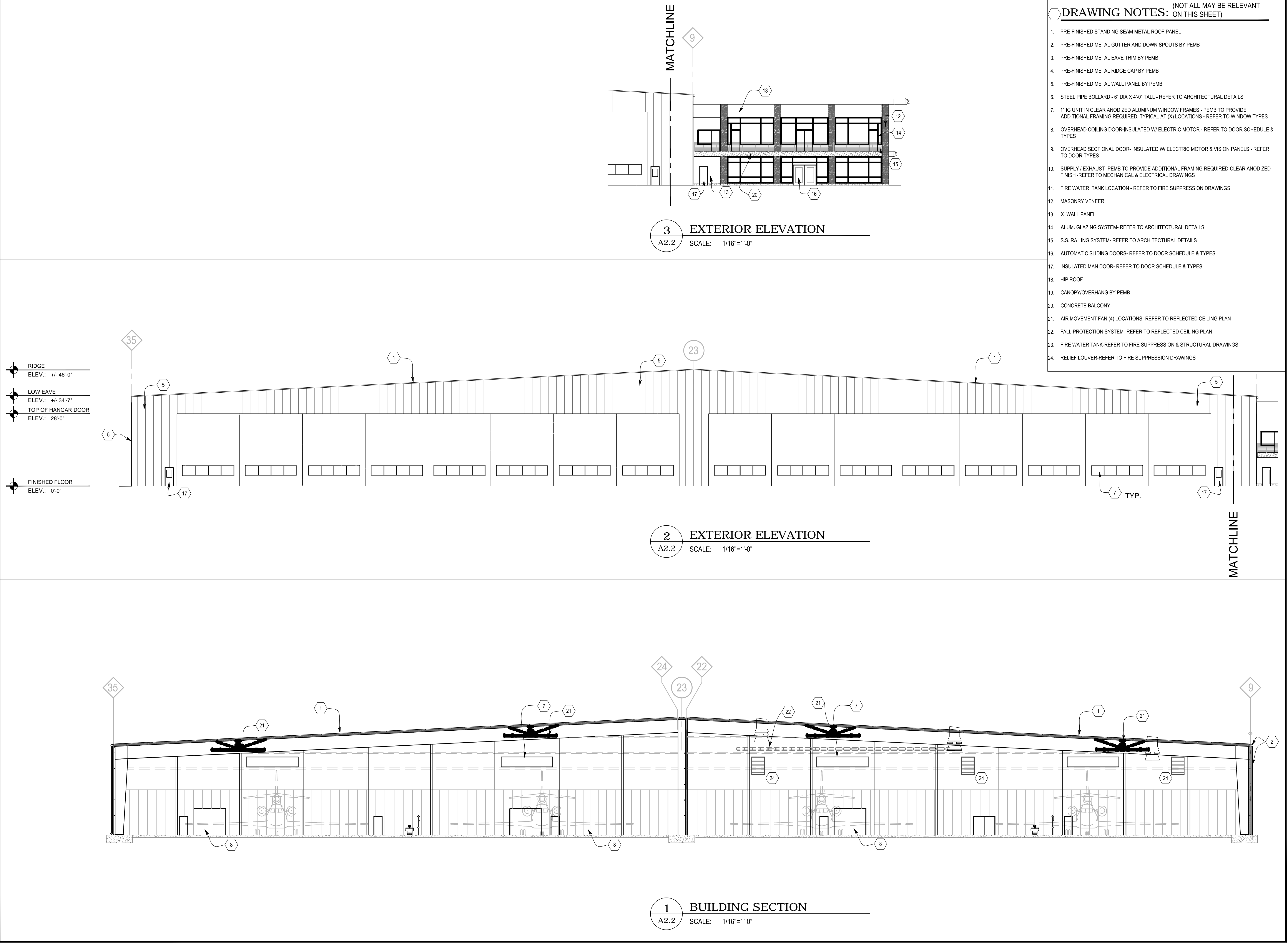


COPYRIGHT 2020 BY BASCON, INC. All rights reserved. BASCON, INC. is licensed for use on the referenced project. Any other use is prohibited without the express written consent of BASCON, INC. This drawing and the information contained herein is prepared by BASCON, INC. in accordance with the professional seal of the State of New Jersey. No other information, including but not limited to, shall be used in connection with this drawing or the information contained herein, and any photocopying or reproduction of this drawing or the information contained herein is prohibited.

Scale For Reproduction
 Inches
 Millimeters



- DRAWING NOTES:** (NOT ALL MAY BE RELEVANT ON THIS SHEET)
1. PRE-FINISHED STANDING SEAM METAL ROOF PANEL
 2. PRE-FINISHED METAL GUTTER AND DOWN SPOUTS BY PEMB
 3. PRE-FINISHED METAL EAVE TRIM BY PEMB
 4. PRE-FINISHED METAL RIDGE CAP BY PEMB
 5. PRE-FINISHED METAL WALL PANEL BY PEMB
 6. STEEL PIPE BOLLARD - 6" DIA X 4'-0" TALL - REFER TO ARCHITECTURAL DETAILS
 7. 1" IG UNIT IN CLEAR ANODIZED ALUMINUM WINDOW FRAMES - PEMB TO PROVIDE ADDITIONAL FRAMING REQUIRED. TYPICAL AT (A) LOCATIONS - REFER TO WINDOW TYPES
 8. OVERHEAD COILING DOOR-INSULATED W/ ELECTRIC MOTOR - REFER TO DOOR SCHEDULE & TYPES
 9. OVERHEAD SECTIONAL DOOR- INSULATED W/ ELECTRIC MOTOR & VISION PANELS - REFER TO DOOR TYPES
 10. SUPPLY / EXHAUST -PEMB TO PROVIDE ADDITIONAL FRAMING REQUIRED-CLEAR ANODIZED FINISH-REFER TO MECHANICAL & ELECTRICAL DRAWINGS
 11. FIRE WATER TANK LOCATION - REFER TO FIRE SUPPRESSION DRAWINGS
 12. MASONRY VENEER
 13. X WALL PANEL
 14. ALUM. GLAZING SYSTEM- REFER TO ARCHITECTURAL DETAILS
 15. S.S. RAILING SYSTEM-REFER TO ARCHITECTURAL DETAILS
 16. AUTOMATIC SLIDING DOORS- REFER TO DOOR SCHEDULE & TYPES
 17. INSULATED MAN DOOR- REFER TO DOOR SCHEDULE & TYPES
 18. HIP ROOF
 19. CANOPY/OVERHANG BY PEMB
 20. CONCRETE BALCONY
 21. AIR MOVEMENT FAN (4) LOCATIONS- REFER TO REFLECTED CEILING PLAN
 22. FALL PROTECTION SYSTEM-REFER TO REFLECTED CEILING PLAN
 23. FIRE WATER TANK-REFER TO FIRE SUPPRESSION & STRUCTURAL DRAWINGS
 24. RELIEF LOUVER-REFER TO FIRE SUPPRESSION DRAWINGS

ISSUE

BASCON, INC.
 607-500-Redna Terrace
 Cincinnati, Oh. 45215-1171
 513/772-1674 FAX: 772-1684
 Website: www.basconinc.com

bascon
 architects-engineers-developers
 constructors-construction managers

ARCHITECTURAL
 EXTERIOR ELEVATIONS
FLIGHTSERY
 HANGARS, SHOPS & OFFICES
 TRENTON-MERCER AIRPORT, 1 JACK STEPHAN WAY
 TRENTON, NJ 08628

STATE OF NEW JERSEY
 REGISTERED PROFESSIONAL ARCHITECT
 20176

DATE: 06-19-20
 DRAWN BY: SS
 PROJECT NO.: 180006
 SHEET NO.: **A2.2**